



A Comprehensive Partner  
in Electronic Manufacturing



# Comprehensive Manufacturing Solutions

With more than 50 years of history, EFE Laboratories is an established and experienced contract manufacturer that provides innovative solutions for its customers across diverse markets. Through superior product design, development, and manufacturing services, EFE brings extraordinary expertise to fit our customers' diverse needs.

We provide the experience and value that our customers need to grow.

We are much more than a vendor. Our team's design and manufacturing talents deliver maximum value ... and by partnering with our customers, we provide engineered solutions optimizing their ROI. EFE does this by relying on an industry-leading commitment to quality evidenced by our UL, ISO, IPC, and other certifications. From startups to the Inc. 500, EFE has proven its ability to deliver measurable value to all its customers.

## Contract Manufacturing Services

Our core philosophy goes beyond the simplicity of win-win; we seek the benefit for our customers before ourselves. That's the foundation of the EFE experience.

## Quality Control Systems

Our customers demand quality, and we demand the same of ourselves. Our list of compliance certifications is long and continually expanding:

- ISO 9001:2015
- AS9100D
- Inspection and workmanship standards IPC-A-610 and IPC/WHMA-A-620A
- UL-508A
- ITAR
- J-STD-001, and more.

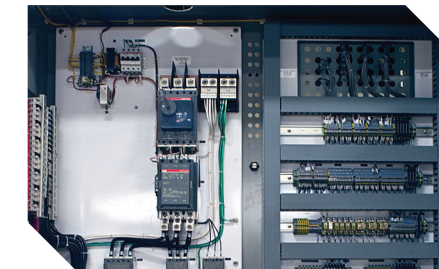
# Manufacturing Capabilities

Engineering is the pinnacle skill that sets us apart from other contract manufacturers. Our in-house engineering staff brings a level of capability that surpasses others in this field.



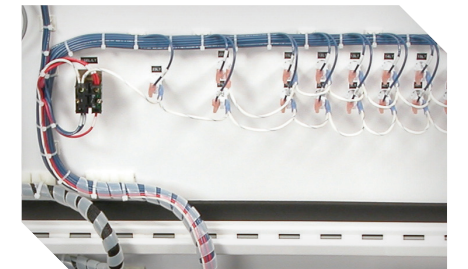
### Box Builds

EFE designs and manufactures custom electro-mechanical assemblies that serve specific functions. Some examples of past work include test communication interfaces, motion control, bioprocessing controls, medical supporting instruments, and telecommunication devices.



### Control Panels

UL and IPC workmanship standards, in conjunction with ISO certification, allow us to drive quality from continuity check to full power-up. We are fully equipped to handle custom panel requirements from design assistance to production.



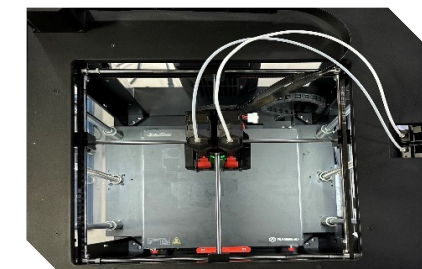
### Cable Harnesses

EFE's engineering team specifies cable harnesses for various products. With design capabilities, we can custom build molds for most specified overmolding requirements.



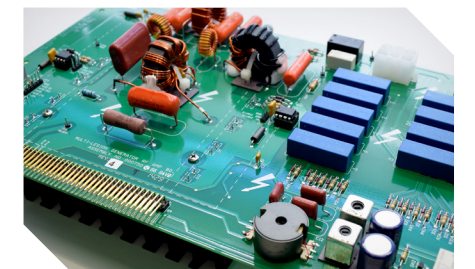
### Capital Equipment

Our electro-mechanical designers apply state-of-the-art technology to address the functional requirements of our customers' challenges. EFE designs, manufactures, and validates capital equipment in the pursuit of turnkey solutions.



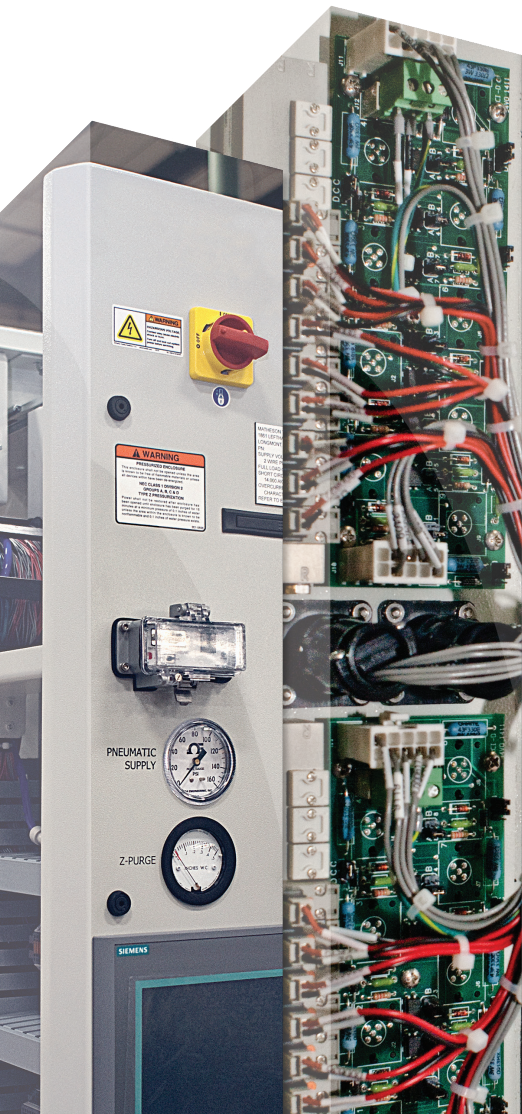
### Material Specialist

Growing our in-house capabilities, our material specialties are ever evolving. Between 3D printing, our vast machine shop, and design software, we can bring to life most fixtures and material customizations imagined.



### Printed Circuit Board Assembly

EFE's PCB assembly facility is IPC-A-610 compliant. Through our in-house tooling and supply chain resources, we serve our customers' needs ranging from prototyping to high volume production.



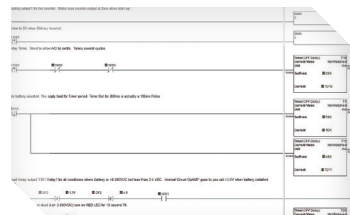
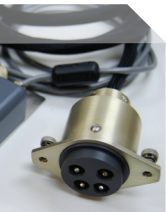
# A History of Quality in Manufacturing

With over a half century of experience serving the most demanding industries and supporting the vision of small projects to large companies, EFE has developed engineering and management strength, operations knowledge, and the ability to execute the product development cycle.

Clients turn to us for design engineering and manufacturing services, guidance in carrying prototypes to mass-producible products, electro-mechanical assemblies, industrial/machine controls, and more.

Engaging a contract manufacturer requires an investment of trust. With more than 500 companies that we have served throughout our history, EFE delivers value through long-term customer relationships. We are proud of the long list of customers who have matured and prospered with us through the years.

At EFE we promise to provide an extraordinary experience that propels your growth. Our skill and industry knowledge enable us to deliver value through collaboration and execution. Contact us and let us show you how EFE can be a valuable partner for your manufacturing and design process.



Complete Manufacturing Solutions

700 West Park Ave  
Perkasie, PA 18944

p: 215-672-2400  
e: sales@efelabs.com

[www.efelabs.com](http://www.efelabs.com)